

## 4. Specifications

<b>Model:</b>	<b>TP1210000-2</b>
Input Power:	120 / 240V AC @ 50/60Hz
Output Power:	12V DC
Total Output Current (Max):	10.0A, 120W
Output Current (Max) per port:	1111mA, 13.33W or 556mA, 6.67W
Fuses Rating at:	1.0 A, 250V AC (10x 2.0A, 250V AC supplied separately with unit)
Main Fuse Rated at:	10.0A, 250V AC
Mounting:	Wall
Weatherproofing:	No
Dimensions:	210 x 248 x 90mm

### TECHNICAL SUPPORT:

For Technical Support for any Xvision product please contact your local distributor.

### LIMITED WARRANTY:

This product is supplied with a 1 Year warranty. The Warranty excludes products that have been misused, (including accidental damage) and damage caused by normal wear and tear. In the unlikely event that you encounter a problem with this product, it should be returned to the place of purchase.

Manufactured exclusively for Xvision - [www.x-vision.co.uk](http://www.x-vision.co.uk)



#### UK/Europe

Xvision Group (UK)  
Unit 2, Valley Point,  
Beddington Farm Road,  
Croydon, Surrey  
CR0 4WP  
Email: [sales@x-vision.co.uk](mailto:sales@x-vision.co.uk)

#### Middle East

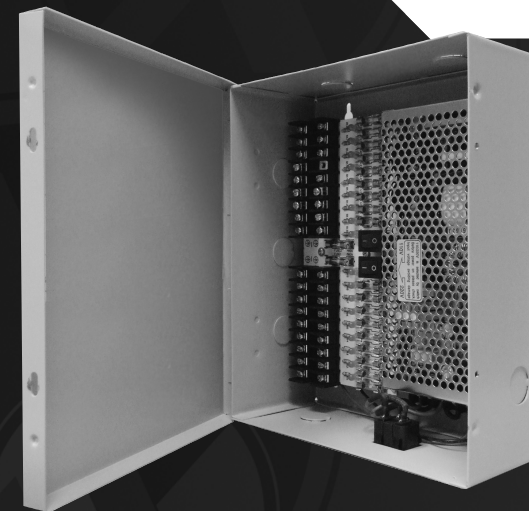
Burjuman Tower,  
18th Floor  
PO Box 121828  
Dubai 43659  
United Arab Emirates  
Email: [mesales@x-vision.co.uk](mailto:mesales@x-vision.co.uk)

#### Far East

Kyoung Am Building  
157-27 Samsung-dong  
Kangnam-ku  
135 090 Seoul  
Korea  
Email: [globalsales@x-vision.co.uk](mailto:globalsales@x-vision.co.uk)

#### North America

100 Park Avenue  
New York City,  
New York  
10017  
United States  
Email: [usasales@x-vision.co.uk](mailto:usasales@x-vision.co.uk)



**Model: TP1210000-2**  
12V DC 10000mA, 9/18 output,  
Professional Wall Mount Power Supply

## Before you begin

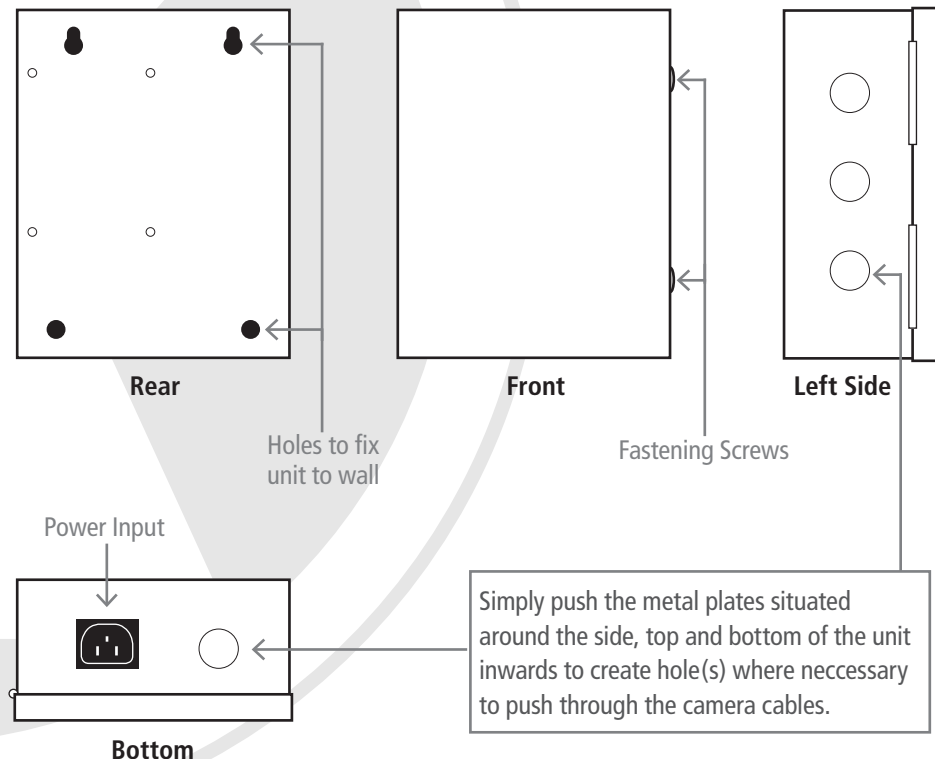
- Use a suitably rated plug and lead according to the input power specification, and ensure a proper connection to Earth at all times.
- Ensure the AC Input power is off before working with the unit.
- The Unit will supply a constant voltage to all Output contacts as specified. Each Output is protected with a fast blow fuse. The fuse will blow open circuit if the current rating is exceeded and the remainder Outputs will be unaffected.
- The unit is protected against reverse polarity and fuse fault. Should the common supplied output be short circuited, the unit will drop the voltage until the fault is corrected. It will immediately reset the voltage when the fault is removed. The same applies when exceeding the Current specification.

**Model:**  
**TP1210000-2**  
12V DC 10000mA, 9/18 output,  
Professional Wall Mount Power Supply

## 1. Product Description

The TP1210000-2 features 9 individually fuse protected 1100mA outputs or 18 550mA outputs, with output current limiting & over voltage protection. This well designed unit is easy to install & provides a professional solution to power distribution in all types of CCTV installations.

## 2. Product Assembly



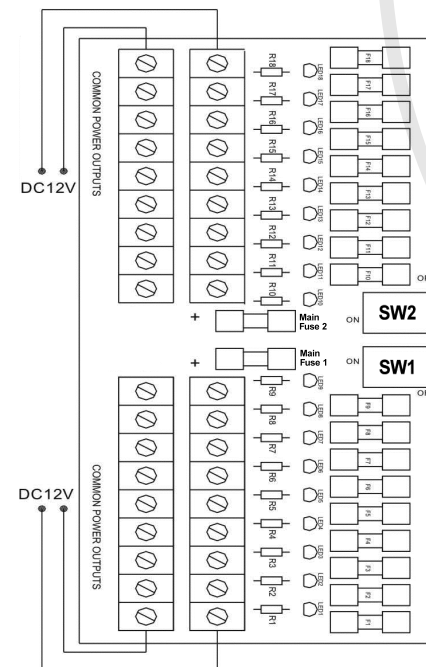
## 3. Installation

1. Mount the Power Supply case at the required location.
2. Ensure the switches SW1 and SW2 are in the OFF position.
3. Connect each camera to the individually protected outputs.

**NOTE:**

- The ports use parallel connenction so up to 9 ports can be used to achieve up to 1100mA per output using only the SW1 circuit board, or alternatively, up to 18 ports can be used to achieve up to 550mA per output using both the SW1 and SW2 circuit boards. Only use the SW2 circuit board once the SW1 circuit board is full.
- The unit is supplied fitted with 18x 1.0A, 250V AC fuses ready for connecting 9 to 18 cameras (using both SW1 and SW2 circuit boards).  
**When using up to 9 ports on the SW1 circuit board, replace the individual fuses with 9x 2.0A, 250V AC fuses which are supplied with the unit.**

4. Plug in the 120/240V AC power supply.
  5. Turn the SW1/SW2 switch on the circuit board to the ON position.
- When the unit is powered up, the GREEN LEDs should light up.



### NOTE:

Make sure that + (positive) is connected to the + on your camera and - (negative) to the - on your camera.