

4. Specifications

Model: TP125000-2

Input Power: 100 / 240V AC @ 47-63Hz

Output Power: 12V DC

Total Output Current (Max): 5.0A, 60W

Output Current (Max) per port: 556mA, 6.67W

Fuses Rating at: 1.0 A, 250V AC

Main Fuse Rated at: 5.0A, 250V AC

Mounting: Wall

Weatherproofing: No

Dimensions: 210 x 248 x 90mm

TECHNICAL SUPPORT:

For Technical Support for any Xvision product please contact your local distributor.

LIMITED WARRANTY:

This product is supplied with a 1 Year warranty. The Warranty excludes products that have been misused, (including accidental damage) and damage caused by normal wear and tear. In the unlikely event that you encounter a problem with this product, it should be returned to the place of purchase.

Manufactured exclusively for Xvision - www.x-vision.co.uk



UK/Europe

Xvision Group (UK)
Unit 2, Valley Point,
Beddington Farm Road,
Croydon, Surrey
CR0 4WP
Email: sales@x-vision.co.uk

Middle East

Burjuman Tower,
18th Floor
PO Box 121828
Dubai 43659
United Arab Emirates
Email: mesales@x-vision.co.uk

Far East

Kyoung Am Building
157-27 Samsung-dong
Kangnam-ku
135 090 Seoul
Korea
Email: globalsales@x-vision.co.uk

North America

100 Park Avenue
New York City,
New York
10017
United States
Email: usasales@x-vision.co.uk



Model: TP125000-2
12V DC 5000mA, 9 output,
Professional Wall Mount Power Supply

Before you begin

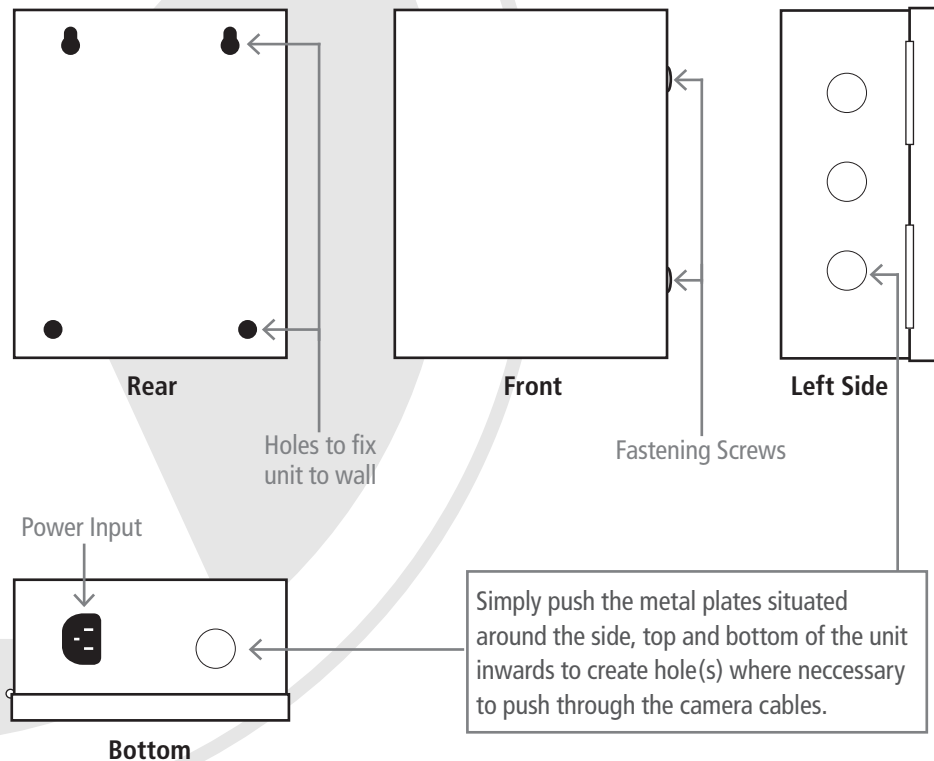
- Use a suitably rated plug and lead according to the input power specification, and ensure a proper connection to Earth at all times.
- Ensure the AC Input power is off before working with the unit.
- The Unit will supply a constant voltage to all Output contacts as specified. Each Output is protected with a fast blow fuse. The fuse will blow open circuit if the current rating is exceeded and the remainder Outputs will be unaffected.
- The unit is protected against reverse polarity and fuse fault. Should the common supplied output be short circuited, the unit will drop the voltage until the fault is corrected. It will immediately reset the voltage when the fault is removed. The same applies when exceeding the Current specification.

Model:
TP125000-2
12V DC 5000mA, 9 output,
Professional Wall Mount Power Supply

1. Product Description

The TP125000-2 features 9 individually fuse protected 550mA outputs with output current limiting and over voltage protection. This well designed unit is easy to install and provides a professional solution to power distribution in all types of CCTV installations.

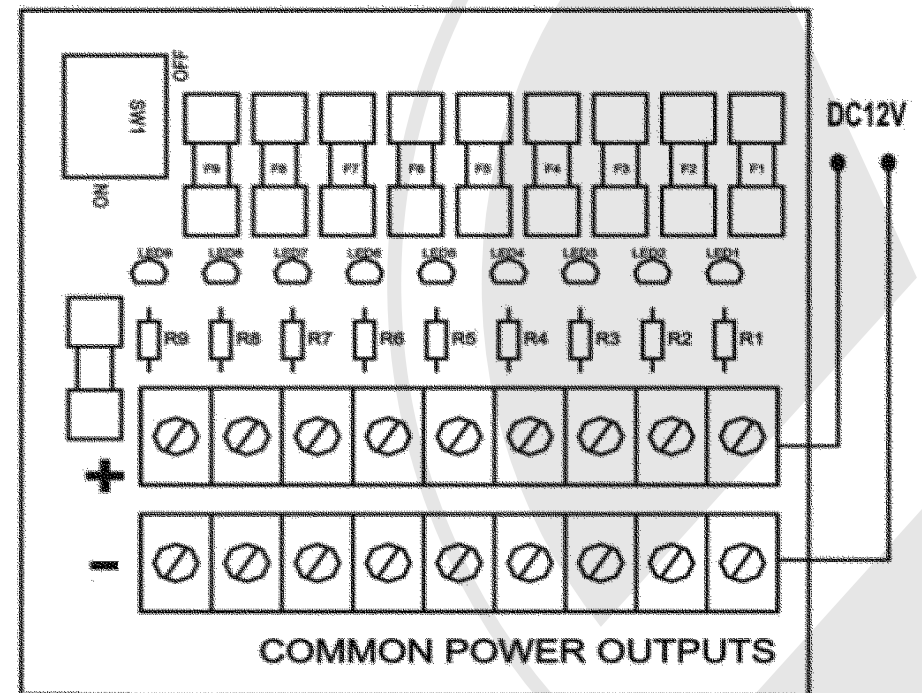
2. Product Assembly



3. Installation

1. Mount the Power Supply case at the required location.
2. Ensure the switch SW is in the OFF position.
3. Connect each camera to the individually protected outputs.
4. Plug in the 100-240V AC power supply.
5. Turn the switch on the circuit board to the ON position.

When the unit is powered up, the GREEN LEDs should light up.



NOTE: Make sure that + (positive) is connected to the + on your camera and - (negative) to the - on your camera.